

2018-2019

**Urology
Residency Program**



**Our mission:
*to serve, to heal,
to educate.***



Welcome from our Program Directors



Allen D. Seftel, MD



Jeffrey J. Tomaszewski, MD

The Urology Residency at Cooper Medical School of Rowan University and Cooper University Hospital is a vibrant program dedicated to providing high-quality, structured training. Residents are placed in a mentored environment that facilitates progressive advancement on an individual basis throughout the duration of the program. Weekly conferences, ongoing clinical rotations, unique research projects, and operating room experiences constitute the core of the instructive curriculum. The didactics are buoyed by a diverse Cooper Urology faculty. We believe that our urology residency is a wonderful place to train and look forward to your application.

Allen D. Seftel, MD

Program Director, Urology Residency
Head, Division of Urology

Welcome, and thank you for considering Cooper Urology! We provide a diverse and well-rounded faculty dedicated to resident education, scholarly achievement, and surgical training. The residents are exposed to an outstanding breadth and depth of clinical and operative training, with ample, early, and graded opportunities for autonomy. The residents experience great camaraderie, and take pride in the Cooper Urology esprit de corps! Cooper Urology seeks highly motivated, passionate, and dedicated applicants looking to contribute to the academic growth of urology and serve as leading clinicians.

Jeffrey J. Tomaszewski, MD

Associate Program Director, Urology Residency



CooperHealth.edu

A Note from the Department Chief



Jeffrey P. Carpenter, MD

“We provide a rich and varied training experience with a large and growing surgical volume.”

CooperHealth.edu

Greetings and thank you for your interest in training at Cooper.

We are southern New Jersey’s only academic, tertiary care medical center. As such, we provide a rich and varied training experience with a large and growing surgical volume.

I became Chairman in 2008, after 23 years at the University of Pennsylvania. Since then, Cooper has seen the addition of its new Cooper Medical School of Rowan University, which graduated its first class in 2016. This has deepened our academic resources and enriched the training environment. The campus has seen a number of expansions during this time, with the addition of 17 operating rooms, including two robotic rooms, a room equipped with a CT scanner, a room with an O-arm, a hybrid angiographic suite, and state-of-the-art laparoscopy rooms. We are in the midst of another OR expansion, adding eight rooms, including two rooms dedicated to interventional hybrid imaging.

The affiliation of Cooper with the world-renowned MD Anderson Cancer Center to create the MD Anderson Cancer Center at Cooper has dramatically increased the volume of oncologic and reconstructive surgeries, providing many opportunities for participation in advanced treatment and research protocols.

Our Level 1 Trauma Center is the region’s largest and busiest, offering surgical trainees a rich experience in management of traumatic injuries and reconstruction. Our faculty has more than doubled in size since 2008 and now numbers more than 60 surgeons. While they are clinically excellent and busy, they are also extremely academically productive and seek to collaborate with trainees to mentor them in research.

In 2017, the Department of Surgery at Cooper published over 100 articles and book chapters. Our faculty serve on the editorial boards of many journals and are nationally and internationally recognized as leaders in their specialties. We have an active basic science research program, with emphases on regenerative medicine and epigenetics. The department maintains both a large animal and small animal vivarium with two large animal operating rooms. We are passionate about education of surgical trainees and welcome your interest in our programs.

Jeffrey P. Carpenter, MD
Chairman and Chief, Department of Surgery

Urology Residency Program



Christina Ho, MD
URO-4 Chief Resident

Contact Information

Director:

Allen D. Seftel, MD

Contact:

Ashley Sheeran, Coordinator

Phone:

856-963-6889

Fax:

856-365-7582

E-mail:

Sheeran-Ashley@CooperHealth.edu

Website:

CooperHealth.edu/Residencies/Urology

Address:

Cooper University Hospital
Office of Surgical Education
Three Cooper Plaza, Suite 411
Camden, NJ 08103

CooperHealth.edu

The Urology Residency program at Cooper Medical School of Rowan University is a five-year ACGME accredited program, which includes one year of general surgery and four years of urology training. Our goal is to produce superior clinical and academic surgeons who are trained in all facets of modern urologic surgery and will be eligible for certification by the American Board of Urology upon completion of the program.

Our Urology residents are part of the operating team in all cases at the Cooper University Hospital and the Outpatient Surgical Center. Residents at each level are afforded a rich operative experience due to the volume and variety of surgical diseases throughout the hospital system, with chief residents averaging more than 1500 index cases over four years. Broad exposure to the components of adult and pediatric urology is gained through rotations at Cooper University Hospital and the Voorhees Outpatient Surgical Center, Alfred I. duPont for Children, Kennedy University Hospital, Christiana Hospital, and Voorhees Adult Urology Clinic.

The operative experience of the program is complemented by a rigorous academic conference schedule designed to promote resident advancement in both surgical knowledge and presentation skills. The interdisciplinary nature of several of the conferences enhances the educational experience of the residents and promotes an appreciation for various views and approaches to surgical problems and issues. Additionally, our residents are required to complete yearly clinical research projects and an outcomes project, in recognition of the need for both clinical and academic physicians in current and future healthcare environments.

The quality of education offered by the Cooper Medical School program ranks highly among its peers, yet a committed faculty continuously searches for ways to improve upon the structure. We value your individual participation and feedback regarding your experience. The entire faculty hopes that you will find a balance of clinical and academic activities and enjoy a healthy camaraderie and team spirit during your residency.

Your growth as a surgeon should parallel your personal development. During your training, many of you will form close, lifelong relationships both inside and outside the hospital. Do not neglect these relationships. We encourage you to continue hobbies and interests that make you a complete person. These endeavors will not only be fruitful for you in your personal growth, but will benefit your patients, by providing them a balanced, compassionate urologist.

serve

Urology Attendings and Faculty

Areas of Expertise:

Allen Seftel, MD

Male Sexual Function
and Benign Prostate Disease

Jeffrey Tomaszewski, MD

Urologic Oncology

Arturo Canto, MD

General Urology

Peter Bernhard, MD

Urological Calculi

Ronak Gor, MD

Reconstructive Urology

S. John Swanson, III, MD

Renal Transplantation Surgery

Ahmad Bani-Hani, MD and T. Ernesto Figueroa, MD

Pediatric Urology

Michael DiSanto, PhD

Urogenital Smooth Muscle



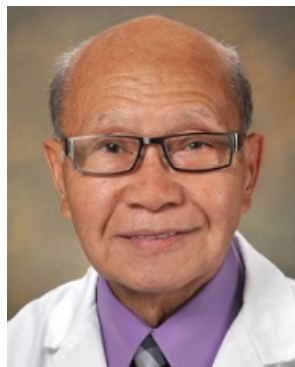
Allen Seftel, MD



Jeffrey Tomaszewski, MD



Ronak Gor, MD



Arturo Canto, MD



Peter Bernhard, MD



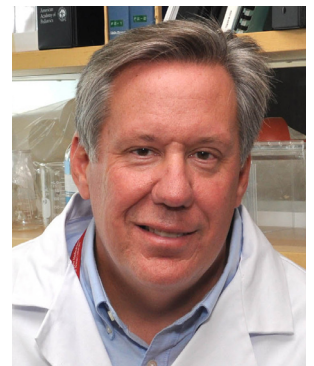
S. John Swanson, III, MD
Christiana Hospital



Ahmad Bani-Hani, MD
Al duPont



T. Ernesto Figueroa, MD
Al duPont



Michael DiSanto, PhD
*Cooper Medical School of
Rowan University*

Facilities



Residents are immersed in this rich environment, and have ample opportunity to interact with faculty and peers through formal and informal teaching sessions.

Cooper University Hospital Care (CUHC), is a 640-bed acute care academic medical center, serving southern New Jersey and the Delaware Valley. Cooper University Hospital is the clinical campus of Cooper Medical School of Rowan University and offers training programs for medical students, residents, fellows, and nurses in a variety of specialties. The Trauma Center at Cooper University Hospital was established in 1982 and is one of only three New Jersey State-Designated Level I Trauma Centers verified by the American College of Surgeons, the highest national recognition possible. Cooper serves as the regional Trauma Center for southern New Jersey including Atlantic, Burlington, Camden, Cape May, Cumberland, Gloucester, Mercer, Ocean and Salem counties and acts as a resource for the Level II Trauma Centers in our region. A Level I Trauma Center cares for severely injured patients involved in motor vehicle crashes, falls, industrial accidents and acts of violence. On average, Cooper admits nearly 3,500 trauma patients each year, making it the busiest center in New Jersey. In addition, Cooper University Hospital serves as southern New Jersey's major tertiary care referral hospital for specialized services. Cooper Premier Institutes, Centers of Excellence, and programs include: MD Anderson Cancer Center at Cooper, Surgical Services Institute, Adult Health Institute, Cooper Heart Institute, Cooper Bone and Joint Institute, Cooper Neurological Institute, Center for Critical Care Services, and the Center for Trauma Services, which includes our Level I Trauma Center and Level II Pediatric Trauma Center.

Alfred I. duPont, located in Wilmington, DE, is a 300 acre in-patient and outpatient clinic dedicated to providing children in the Philadelphia and South Jersey area with state-of-the-art treatments for urological conditions. This facility is under the supervision of Dr. T. Ernest Figueroa, a board-certified and fellowship-trained pediatric urologist. All major pediatric urologic procedures will be performed at Alfred I. duPont Children's Hospital.

Voorhees Adult Urology Office and Surgical Center, located in Voorhees, New Jersey, is a 60,000 square-foot facility that is attached to four outpatient surgical suites and one procedure room. This facility houses a multi-disciplinary adult clinic ranging from cardiology to hematology-oncology to other primary care disciplines. Urology shares space at this outpatient facility. This facility has in-house radiology and laboratory suites.

Cooper University Hospital Adult Clinical Urology Clinic provides a good procedural experience as well as an extensive outpatient experience, including both outpatient office visits and outpatient office procedures, such as cystoscopy and transrectal biopsy clinics. There is a wide breadth of general primary urology that is experienced at this facility. The clinic is staffed by one of our full-time faculty members. The resident team is composed of junior and/or senior urology resident. The clinic is held one half-day on Monday afternoons, Wednesday afternoons, and Thursday mornings.

Christiana Care Health System is one of the country's largest health care systems, ranking as the 22nd leading hospital in the nation and 12th on the East Coast in terms of admissions. The health system includes The Medical Group of Christiana Care, a network of primary care physicians, medical and surgical specialists as well as home health care, preventive medicine, rehabilitation services and patient/family advisors for core health care services. A not-for-profit teaching hospital affiliated with Sidney Kimmel Medical

Facilities continued



Robotic Simulator

The Intuitive Surgical® Skills Simulator for the da Vinci Si and Xi Surgical Systems is available for use by all urology residents.

A standardized training platform and graded training allows residents to quickly overcome their learning curve and prepares them to sit safely at the control console in the operating room. A number of skill exercises are available on the simulator which allow objective and reliable measurement of resident preparedness for actual cases.

All urology residents progress through the same standard curriculum, and there is one conference session per month dedicated to skills training. The simulator experience is invaluable for OR preparation and resident education, and eliminates the need to "practice" during live surgery.

College at Thomas Jefferson University, Christiana Care is recognized as a regional center for excellence in cardiology, cancer and women's health services. Christiana Care has an extensive range of outpatient services, and through Christiana Care Quality Partners, Christiana Care works closely with its medical staff to achieve better health, better access to care and lower cost. Christiana Care is the home of the only adult kidney transplant program in the state. Christiana Care is home to Delaware's only Level I trauma center, the highest capability center and the only one of its kind between Philadelphia and Baltimore. Christiana Care features a Level III neonatal intensive care unit, the only delivering hospital in Delaware that offers this highest level of care to the most critically ill newborns. Christiana Care includes two hospitals with 1,100 patient beds. For more information about Christiana Care, visit www.christianacare.org/whoweare.

MD Anderson Cancer Center at Cooper

In October 2013, MD Anderson Cancer Center at Cooper opened a new, state-of-the-art, \$100 million, four-story, 103,050 sq. ft. comprehensive cancer center on Cooper's Health Sciences Campus in Camden to expand access to outstanding cancer care for residents of southern New Jersey and beyond.

The new facility offers expanded programs and services in an environment that fosters a multidisciplinary team approach to medicine. In this dynamic environment, cancer specialists from various medical disciplines (medical oncology, radiation oncology, surgical oncology, gynecologic oncology and urology) conduct concurrent, complementary clinical sessions, fostering professional interaction and collaboration. The urologic oncology staff hold regular clinic hours at the Cancer Center, and the residents attend a half-day clinic per week on a rotating basis.

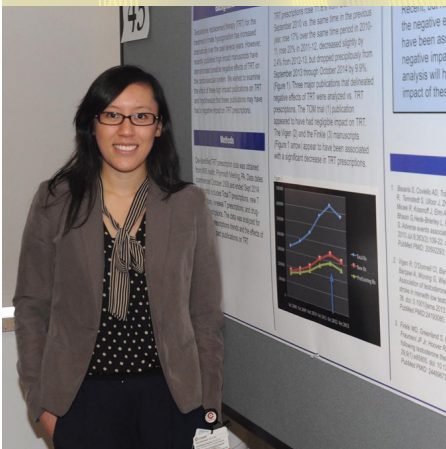
Each level of training has specific number of rotations. The year is divided equally among rotations at each level to provide equality to each area and to better provide for continuity of patient care. These details are seen with each of the rotation schedules. Urological residents are part of the operating team at each of our institutions. The chief resident assigns the residents at the junior PGY levels to scheduled cases in both inpatient and outpatient operating rooms according to case complexity in proportion to the level of training of each resident.

Each institution maintains a pre-admission testing area where residents evaluate the patients and diagnostic studies performed five to seven days prior to admission. This system allows for optimal preoperative assessment of various operations that the resident will perform. In addition, this system has been devised on particular services for residents to participate in preoperative evaluation of patients in the faculty member's offices as well as postoperative follow-up visits (Adult Outpatient resident/Transplant resident). The resident team plays a major role in the postoperative care of all patients, serving as a firstcall response and rounding twice per day. Work habits, interpersonal skills, overall abilities, and attitudes are learned through role modeling and throughout organized didactic sessions. On the Pediatric rotations, the resident participates in the office setting via providing continuity of care. At the Alfred I. DuPont campus, the resident encounters patients preoperatively and sees the patients that he/she has operated on postoperatively on a regular and continual basis.

Educational Conferences



The conferences provide consistent forums for direct communication between the residents and faculty regarding the care of their patients.



A full range of academic conferences takes place at Cooper University Hospital, providing consistent forums for direct communication between the residents and faculty regarding the care of their patients. Dedicated time every Tuesday and Friday morning is devoted to resident education in order to allow residents ample protected time for academic activities.

Urology Didactic Conferences

This weekly conference covers the core urology curriculum. Topics include core urology, medico-legal and ethical issues. Most of the conferences are discussions in a Socratic format, with the assigned faculty asking residents to explain specific aspects of the urologic topic under discussion. Some topics (such as fundamentals of chemotherapy, radiation therapy, renal transplantation, geriatrics, medico-legal, and risk management) are presented by experts outside of the department. Each resident is expected to present at least one conference per year. Topics are chosen by the resident, with approval from the faculty, to allow the residents to pursue areas of interest in more detail.

Uroradiology & Patient Management Conference

This conference is designed to discuss clinical cases from initial patient presentation to final treatment plan. The focus of this conference is to have an in-depth radiology-based discussion of clinical cases to define appropriate clinical management algorithms and controversies. Residents are responsible for preparing cases with x-rays and reviewing current treatment of urologic diseases in preparation for this conference. The Chief resident will be responsible for choosing the pertinent educational case. For each case a resident familiar with the patient is expected to explain the clinical presentation. Another resident, not familiar with the patient, is chosen to work through the case by asking for additional history, physical exam findings, laboratory results and radiologic studies. The resident is often requested to explain the rationale for requesting additional studies. There is much emphasis on understanding what useful information will be gained by obtaining additional studies. This leads to a discussion between residents and faculty about the value of particular studies in certain scenarios. A faculty member is designated to direct the conference on a rotating basis.

Journal Club (Monthly)

Each month the Urology department holds a Journal Club dinner to keep the residents and faculty up to date with current urology literature and to train them to read scientific articles critically by discussing pertinent articles from various urologic disciplines in the Journal of Urology, Urology, JAMA, NEJM, American Urology Associations (AUA) Evidence Based Reviews in Urology (EBRU), and other specialtiespecific journals. All Urologic Attendings attend the conference and discuss the articles selected by the Associate Program Director. The chosen articles span the breadth of urology. Each resident reviews their selected articles and completes a template which forces an organized and comprehensive approach to medical literature. The objective is to teach methods of study design, how outcomes are measured, and how to determine if the statistical methods used were appropriate for the type of study. The template emphasizes

Educational Conferences continued



A full range of
conferences take
place at Cooper
University Hospital.



Hailiu Yang, MD
URO-2 Resident

an appraisal of the quality of the writing, the study design, the clinical applicability of the results, and an assessment of the statistical methods. An assigned faculty member runs the conference with the resident presenting a review of the article based on the template.

Morbidity and Mortality Conference

This monthly conference, mandatory for both residents and faculty, provides quality assurance and peer review for the Division of Urology by discussing all surgical cases from the previous month which merit educational discussion. Specific complications are presented by the resident who participated in the care of the patient, and the case is reviewed to analyze opportunities for patient care and process improvement.

Uro pathology Conference

This conference is set up as a topic-oriented conference reviewing normal and abnormal pathology of the entire genitourinary tract, led by a member from the Department of Pathology. The yearly schedule is based in part upon the previous year's topics and Educational Conferences cover the major areas in urologic pathology: the prostate, bladder, testis, kidney, penis, and adrenal gland. To guide the pathology faculty, we use the American Urological Association genitourinary pathology curriculum.

Pediatric UroRadiology Conference

This conference is held once a month with the pediatric urology faculty and functions as an introduction to pediatric urologic radiology and pediatric urology case management. The resident assigned to the pediatric service selects three to four cases of a particular theme in pediatric urology. The cases are discussed individually, and then a resident presents a 15-minute summary of the topic often with a handout and references. The pediatric urology faculty members will also question the residents about the case and the urologic condition presented.

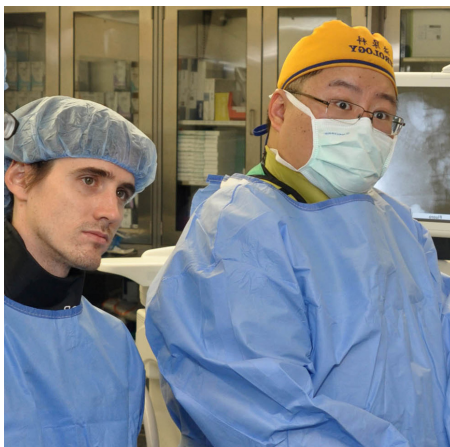
Pediatric Urology Morbidity and Mortality Conference

This conference is held on the second Wednesday of every month at DuPont Hospital for Children and teleconferenced with the urology staff at Cooper. Residents are assigned some of the cases that have educational value. They are expected to be familiar with the case and complication that occurred, be familiar with the Clavien classification of surgical complications, and be able to conduct a literature review that specifically addresses the complication and methods to prevent future recurrence.

Pediatric Urology AUA Core Curriculum Conference

This conference is held every Monday morning and attended by all pediatric urology staff at DuPont Hospital. Residents are assigned topics based on the AUA core curriculum. Additionally, pediatric-specific topics on fluid management, postoperative pain control, and pediatric uro radiology are arranged and presented by corresponding staff from the divisions of pediatric nephrology, anesthesia and radiology.

Educational Conferences continued



Pediatric Urology Journal Club

This conference is designed to discuss pertinent pediatric urology articles in the Journal of Urology. Articles are chosen and presented by the residents and discussed by the group with respect to hypothesis and study design, results, and context with respect to other published literature.

Multi-Disciplinary Cancer Conference

This conference is attended by academic faculty from urology, radiation oncology, genitourinary pathology, radiology, and medical oncology and is designed to discuss and employ the most up-to-date treatment of urologic cancers. This conference importantly highlights genitourinary malignancies and the multidisciplinary approach to patient care.

Anatomical Dissection Conference

This month-long teaching session held weekly during July (at the beginning of the resident year) is designed to review surgical anatomy pertinent to urologic surgery. This conference is held in the gross anatomy lab at Cooper Medical School and is proctored by a faculty member from the Division of Urology and Department of Anatomy. Anatomical dissections will be performed to review pelvic/lower urinary tract anatomy, upper urinary tract anatomy, retroperitoneal anatomy, and male/female external genital anatomy, with one topic to be discussed each week.

Basic Science Conference

Dr. Michael DiSanto, Associate Professor Biomedical Sciences at CMSRU, conducts basic science review lectures with the urology residents and faculty throughout the academic year. Lectures include renal physiology, renovascular hypertension, clinical and research bioethics, biostatistics, neuro-urology physiology, etc.



Patrick Pfizenmayer, MD
URO-1 Resident

heal

Curriculum continued

Master Rotation Schedule

	JULY 1st – SEPTEMBER 30th	OCTOBER 1st – DECEMBER 31th	JANUARY 1st – MARCH 31th	APRIL 1st – JUNE 30th
PGY 5 CHIEF URO-4	In-Patient/Out-Patient Cooper University Hospital	In-Patient/Out-Patient Cooper University Hospital	In-Patient/Out-Patient Cooper University Hospital	In-Patient/Out-Patient Cooper University Hospital
PGY 4 URO-3	In-Patient/Out-Patient Cooper University Hospital	Pediatric Urology Alfred I. DuPont Hospital for Children Campus	Urology/Renal Transplant In-Patient/Out-Patient Cooper University Hospital/ Christiana Hospital	UroGyn Cooper University Hospital/ Kennedy Hospital
PGY 3 URO-2	Pediatric Urology Alfred I. DuPont Hospital for Children Campus	In-Patient/Out-Patient Cooper University Hospital	In-Patient/Out-Patient Cooper University Hospital	In-Patient/Out-Patient Cooper University Hospital
PGY 2 URO-1	In-Patient/Out-Patient Cooper University Hospital	In-Patient/Out-Patient Cooper University Hospital	In-Patient/Out-Patient Cooper University Hospital	In-Patient/Out-Patient Cooper University Hospital



Curriculum continued



Cooper prides itself on tradition. For over 120 years, patients from Camden and the surrounding communities have come to Cooper University Hospital to receive a comprehensive range of health care services, including the highest level of tertiary care in the region.

Monthly Didactic Schedule Example

MONDAY	TUESDAY	WEDNESDAY*	THURSDAY	FRIDAY
Adult Journal Club	Uroradiology and Preoperative Conference	Pediatric Morbidity and Mortality	Pediatric Uroradiology	AUA Core Curriculum and AUA Updates; Uro-pathology Lecture
	Morbidity and Mortality	Pediatric Morbidity and Mortality	Pediatric Uroradiology	AUA Core Curriculum and AUA Updates; Tumor Board
	Uro-pathology and Preoperative Conference		Pediatric Uroradiology	AUA Core Curriculum and AUA Updates; Tumor Board
	Research Lecture		Pediatric Journal Club	AUA Core Curriculum and AUA Updates; Tumor Board

educate

Selection Requirements of the Program



Robert Brown, MD
URO-3 Resident

Due to the competitive nature of the urology residency selection process, residency program directors are interested not only in national board scores (USMLE), medical school class rank, and other traditional methods to measure the ability of medical students, but also in the quality and quantity of electives taken during the senior year. Taking a urology elective is reasonable primarily to “firm up” career decisions about pursuing urology. Our program in urology encourages medical students from outside institutions to do a one month elective at our university hospital. Outside medical students may obtain information for an elective in urology by calling the registrars’ office at Cooper Medical School of Rowan University.

**For more information
regarding the urology
match, please visit
the following website:**

www.auanet.org

Urology Residency
Matching Program
1000 Corporate Boulevard
Linthicum, MD 21090

Phone:

1-866-RING AUA
(1-866-746-4282) Ext. 3913

Fax:

410-689-3939

E-mail:

resmatch@AUAnet.org

How to Apply



Contact Information

Director:

Allen D. Seftel, MD

Contact:

Ashley Sheeran, Coordinator

Phone:

856-963-6889

Fax:

856-365-7582

E-mail:

Sheeran-Ashley@CooperHealth.edu

Website:

CooperHealth.edu/Residencies/Urology

Address:

Cooper University Hospital
Office of Surgical Education
Three Cooper Plaza, Suite 411
Camden, NJ 08103

The Urology Residency Program at Cooper University Hospital participates in the Electronic Residency Application Service (ERAS), and all information is processed through this system without exception. Information regarding the ERAS application process and timeline is available on the websites listed below.

Association of American Medical Colleges

www.aamc.org/eras

Please submit the following information in order for your application to be considered:

- ERAS common application form
- Curriculum vitae
- Medical school transcript
- Two original letters of recommendation
- Dean's letter (MSPE)
- Personal statement describing your training goals and future career plans
- USMLE Report
- ECFMG certification (if applicable)

The program director and additional faculty members will review applicant files. Invitation for interview will be based upon their recommendations.

Program Eligibility

Eligibility for the Urology Residency Program requires graduation from an accredited medical school. Individuals accepted for a position in the program must be U.S. citizen, classified as a resident alien, or hold a J-1 visa.

The application deadline for the 2018-19 academic year is November 1, 2017.

The Cooper Campus and Surrounding Area



The expansion project at Cooper is a direct reflection of the growth in services that Cooper has experienced over the past several years.



It is extraordinary to have such a high concentration of leadership at one institution, but then, Cooper is an extraordinary health care system.

Cooper University Hospital is the center of a growing health sciences campus that includes the hospital, Cooper Medical School of Rowan University, MD Anderson Cancer Center at Cooper, the internationally acclaimed Coriell Institute for Medical Research, Sheridan Pavilion at Three Cooper Plaza medical offices, and the Ronald McDonald House. Adjacent to the Cooper Plaza/Lanning Square neighborhood, Cooper has a long history of outreach and service efforts to its local community. Some of these initiatives include health and wellness programs for the neighborhood, development of neighborhood parks and playgrounds, and outreach to programs into local schools.

The hospital's 312,000-square-foot, 10-story Roberts Pavilion features an expansive lobby and concourse, a restaurant and coffee shop, health resource center, business center, gift shop, and chapel. State-of-the-art patient care facilities include private patient rooms, technologically advanced operating room suites with hybrid imaging capabilities, and an advanced laboratory automation facility. The Emergency Department features 25 beds, dedicated isolation suites, and autonomous CT scanning technology. Designated floors serve specific patient populations including those needing advanced surgical and heart care, along with South Jersey's only dedicated 30-bed inpatient cancer unit.

Also in the Roberts Pavilion is the 25,000-square-foot Dr. Edward D. Viner Intensive Care Unit—featuring 30 private patient rooms equipped with the latest in advanced technology, and allowing 360-degree patient access. Five patient rooms are capable of negative pressure isolation, and five rooms have chambered isolation alcoves. In addition, an enlarged room with operating room caliber lighting is outfitted to perform bedside exploratory laparotomy in patients too unstable for transport to the operating room.

MD Anderson Cancer Center at Cooper, a four-story, 103,050-square-foot center located on the Cooper Health Sciences Campus in Camden, is dedicated to cancer prevention, detection, treatment, and research. The center includes bright, spacious chemotherapy treatment areas, patient exam rooms, a conference center, and advanced diagnostic and treatment technologies.

The design incorporates an aesthetic approach to healing with abundant natural light, a rooftop Tranquility Garden, an illuminated floor-to-ceiling "Tree of Life" centerpiece, and more than 100 pieces of original art created by 71 New Jersey artists.

Cooper Medical School of Rowan University's (CMSRU) Medical Education Building is located on the Cooper Health Sciences Campus on South Broadway, between Benson and Washington Streets in Camden. The building, which opened in July 2012, was designed for CMSRU's curriculum with spaces and technologies to support faculty and students in their educational process.

The Cooper Campus and Surrounding Area *continued*



The Cooper Health Sciences Campus is located in the heart of Camden's business district. The academic medical center campus is easily accessible by car or public transportation via the commuter high-speed line and bus terminal adjacent to the hospital.

Cooper is a short walk or drive from the exciting Camden waterfront which includes a magnificent waterfront park and marina; the Adventure Aquarium; and the BB&T amphitheater, which hosts nationally renowned entertainment throughout the year. Nearby are the Sixers Training Complex, L3 Communications complex, Lockheed Martin, Rutgers University Camden Campus, and Camden County College. There are expected to be \$350M in transportation and infrastructure improvements within the next four- to five-years to handle the influx of thousands of new employees to the area and students at nearby growing academic campuses.

Cooper is conveniently close to Philadelphia. Just a mile-long drive over the Benjamin Franklin Bridge will put you at the doorstep of Philadelphia's cultural, culinary, and historic venues. South Jersey also offers a range of living and entertainment options. Quaint towns such as Haddonfield and Collingswood are just 10 minutes away. The lights and action of Atlantic City and popular beach towns such as Cape May and Ocean City are a one-hour drive from Cooper.



Cooper Campus Map



The most up-to-date directions to Cooper University Hospital are available at:
CooperHealth.org/Directions

campus



World Class Care. Right Here. Right Now.

George E. Norcross III
Chairman
Board of Trustees

Adrienne Kirby, PhD, FACHE
President and Chief Executive Officer
Cooper University Health Care

One Cooper Plaza · Camden, NJ 08103-1489 · CooperHealth.edu

Hospital Main Number: **856-342-2000**

Graduate Medical Education: **856-342-2922**