

2020-2021

Emergency Ultrasound Fellowship Program



Our mission:

to serve, to heal,
to educate.

 **Cooper**
University Health Care

 **Cooper Medical School**
of Rowan University

Welcome



The Emergency Ultrasound Fellowship Program at Cooper University Health Care is a new program that began in July 2018. This is a one-year program designed to give graduates of emergency medicine residency programs the skills and knowledge to become ultrasound program directors and leaders in the field of emergency ultrasound.

There are three primary components to the fellowship program:

Education.

Learning image acquisition and interpretation skills for both basic and advanced emergency and point of care ultrasound applications, and developing lecturing and teaching skills by developing an emergency ultrasound lecture portfolio and contributing to the program's educational mission.

Administration.

Understanding the critical components required to run an emergency ultrasound program and how to best utilize information technologies for image archiving, database management, and quality assurance.

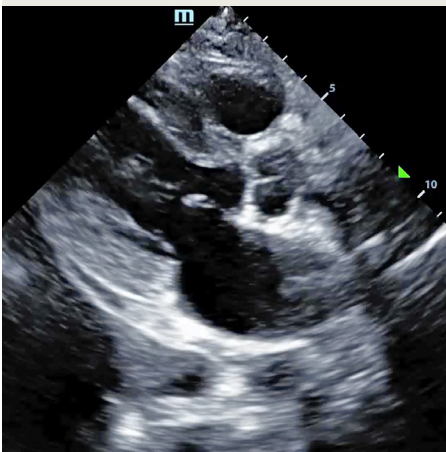
Research.

Understanding the state of emergency ultrasound research by participating in weekly ultrasound journal club activities and developing an independent research project from its inception to publication.

The fellowship is a 12-month position as a part-time attending physician in the Department of Emergency Medicine at Cooper University Health Care which provides a remarkable clinical setting for the fellowship.

to serve

Curriculum and Educational Information



The curriculum of the Emergency Ultrasound Fellowship Program is designed to prepare you for the role of Director of Emergency Ultrasound or general faculty within a Division of Emergency Ultrasound in any emergency department.

The curriculum is focused on the following skills during the year:

Scanning

Paramount to all else in your fellowship, you must become an expert sonographer. The skills you acquire in doing so will be invaluable to your career in emergency medicine and will make you a more skilled clinician. You should aim to become as proficient as an ultrasonography technologist in acquiring images and as competent as a radiologist in terms of interpreting images. Your skills need to reach a level where you feel confident in your own scans, both in identifying and ruling-out pathology, and in knowing when scans are inadequate to do so.

We will directly observe your scanning when possible, and assess your images and interpretations for adequacy when not. You will have scanning shifts with the emergency ultrasound faculty, both when they are working clinically, and when they are not.

Teaching

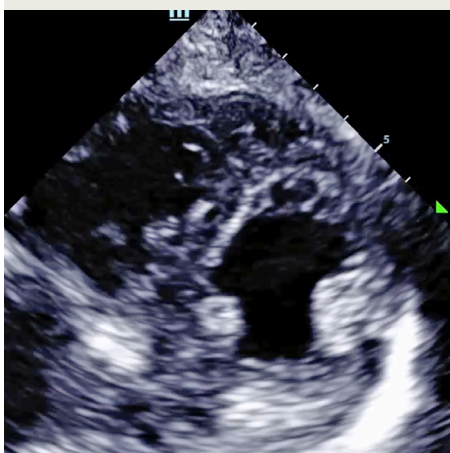
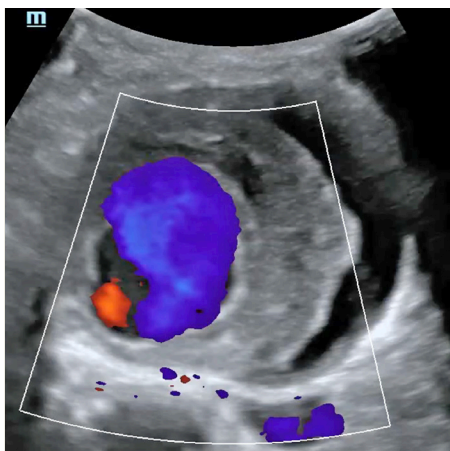
Learning how to teach ultrasound is a fundamental aspect of your fellowship. The most important component to superlative teaching is a strong grasp of the fundamentals of ultrasound. Your teaching experience will consist of both lecturing and hands-on teaching.

We will provide you with background information, literature reviews, and access to image and video clip databases to help you prepare lectures. We will also review your lectures and provide feedback in terms of quality and presentation style. You will receive ample hands-on scanning time with the emergency ultrasound faculty and this will prepare you for independent teaching.

Conference

The fellowship's primary forum for didactics and education is Emergency Ultrasound Conference. This will occur on a weekly basis and consist of a full morning and/or afternoon session on a day to be determined. Your presence is required. One of the emergency ultrasound faculty will be present, as will any residents, students, or fellows who are on the emergency ultrasound rotation.

Curriculum and Educational Information continued



Research

Emergency ultrasound is at the cutting edge of clinical research in Emergency Medicine. Every day new applications that make an immediate impact on clinical practice are being studied and tested. Participation in research is an integral component of your fellowship training.

We will provide you with all the mentorship, resources, and support that you will need to pursue your research interests.

Administration

A keen understanding of the administrative aspects of emergency ultrasound is a necessity for successful implementation of an emergency ultrasound program in any emergency department. Administrative issues are primarily but not exclusively financial, medicolegal, or political in nature. We will do our best to ensure exposure and familiarity with each of these topics.

Quality Assurance

Interpreting and reviewing ultrasound images is as important as developing the skills to acquire them. To ensure that you are performing high-quality scans, all of your images and videos will be reviewed by the emergency ultrasound faculty. Both image quality and image interpretation will be reviewed and we refer to this as internal QA. In addition, there is external QA which compares your findings to findings reported on comprehensive ultrasounds or other consultative imaging studies. To further hone your skills and to prepare you for a director position of your own, you will review other clinicians' ultrasound exams and give them direct feedback on their scans.

Image Management

As technology progresses, so does sophistication of ultrasound machines and their data management systems. With increased use of ultrasound in the emergency department, appropriate image storage and management has become more and more imperative.

International Ultrasound

The role of emergency ultrasound in the developing world is a rapidly emerging one. We encourage but do not require you to pursue international interests, and will assist you in coordinating such endeavors.

to heal

How to Apply



Applicants for the Emergency Ultrasound Fellowship Program at Cooper University Health Care should visit <https://eusfellowships.com/> to apply.



Joshua S. Rempell, MD, MPH

Fellowship Director, Emergency Ultrasound Fellowship
Cooper University Health Care
rempell-joshua@cooperhealth.edu

Contact Information

Fellowship Director:

Joshua S. Rempell, MD, MPH

Contact:

Jillian Torres, Coordinator

Phone:

856.342.2352

E-mail:

torres-jillian@cooperhealth.edu

or

rempell-joshua@cooperhealth.edu

Website:

[www.cooperhealth.edu/fellowships/
emergency-ultrasound-fellowship](http://www.cooperhealth.edu/fellowships/emergency-ultrasound-fellowship)

Address:

Cooper University Hospital
Division of Emergency Medicine
One Cooper Plaza
Suite 152, Kelemen Building
Camden, NJ 08103

to educate

The Cooper Campus and Surrounding Area



**The expansion project
at Cooper is a direct
reflection of the growth
in services that Cooper
has experienced over
the past several years.**



It is extraordinary to have such a high concentration of leadership at one institution, but then, Cooper is an extraordinary health care system.

Cooper University Hospital is the center of a growing Camden health sciences campus that includes the hospital, Cooper Medical School of Rowan University (CMSRU), MD Anderson Cancer Center at Cooper, Sheridan Pavilion at Three Cooper Plaza medical offices, the internationally acclaimed Coriell Institute for Medical Research, and the Ronald McDonald House. Adjacent to the Cooper Plaza/Lanning Square neighborhood, Cooper has a long history of outreach and service efforts to its local community. Some of these initiatives include health and wellness programs for the neighborhood, development of neighborhood parks and playgrounds, and outreach to programs into local schools.

The hospital's 312,000-square-foot, 10-story Roberts Pavilion features an expansive lobby and concourse, a restaurant and coffee shop, business center, gift shop, and chapel. State-of-the-art patient care facilities include private patient rooms, technologically advanced operating room suites with hybrid imaging capabilities, and an advanced laboratory automation facility. The Emergency Department features 25 beds, dedicated isolation suites, and autonomous CT scanning technology. Designated floors serve specific patient populations, including those needing advanced surgical and heart care, along with South Jersey's only dedicated 30-bed inpatient cancer unit.

Also in the Roberts Pavilion is the 25,000-square-foot Dr. Edward D. Viner Intensive Care Unit—featuring 30 private patient rooms equipped with the latest in advanced technology, and allowing 360-degree patient access. Five patient rooms are capable of negative pressure isolation, and five rooms have chambered isolation alcoves. In addition, an enlarged room with operating room caliber lighting is outfitted to perform bedside exploratory laparotomy in patients considered too medically unstable for transport to the operating room.

Cooper University Health Care and MD Anderson Cancer Center in Houston, Texas, partnered in 2013 to create MD Anderson Cancer Center at Cooper. MD Anderson has consistently been named one of the nation's top two cancer hospitals by U.S. News & World Report.

Our partnership is a full clinical integration between the two programs. MD Anderson at Cooper physicians adhere to the same philosophy, processes, and guidelines set by MD Anderson in Houston, and patients receive the same proven practice standards and treatment plans provided at MD Anderson. Today at MD Anderson at Cooper, patients have access to more clinical trials for more types of cancer than ever before, as well as a full range of supportive care services.

The Cooper Campus and Surrounding Area, *continued*



Advanced, comprehensive cancer services are provided at our Camden, Voorhees, and Willingboro campuses. Cooper Digestive Health Institute locations are fully accredited MD Anderson at Cooper locations providing innovative gastrointestinal cancer prevention, detection, and treatment services. Additional cancer clinical services are provided at multiple locations throughout the Philadelphia-South Jersey areas.

CMSRU's Medical Education Building is located on the Cooper Health Sciences Campus on South Broadway, between Benson and Washington Streets in Camden. The medical school, which opened in July 2012, was designed to support an innovative curriculum that integrates knowledge of basic science concepts, early clinical experience and patient care, self-directed learning, teamwork, and medical and non-medical activities for the greater community's benefit.

The Cooper Health Sciences Campus is located in the heart of Camden's business district. The academic medical center campus is easily accessible by car or public transportation via the PATCO and bus terminal adjacent to the hospital.

Cooper is a short walk or drive from the exciting Camden waterfront, which includes a magnificent waterfront park and marina; the Adventure Aquarium; and the BB&T Pavilion, which hosts nationally renowned entertainment throughout the year. Nearby are the Sixers Training Complex, L3 Communications complex, Lockheed Martin, Rutgers University Camden Campus, and Camden County College. There are expected to be \$350M in transportation and infrastructure improvements within the next four to five years to handle the influx of thousands of new employees to the area and students at nearby growing academic campuses.

Cooper is conveniently close to Philadelphia. Just a mile-long drive over the Benjamin Franklin Bridge will put you at the doorstep of Philadelphia's cultural, culinary, and historic venues. South Jersey also offers a range of living and entertainment options. Quaint towns such as Haddonfield and Collingswood are just 10 minutes away. The lights and action of Atlantic City and popular beach towns such as Cape May and Ocean City are a one-hour drive from Cooper.

Cooper Camden Campus Map



The most up-to-date directions to Cooper University Hospital are available at:
CooperHealth.org/Locations



One Cooper Plaza · Camden, NJ 08103-1489 · CooperHealth.edu

Hospital Main Number: **856.342.2000**

Graduate Medical Education: **856.342.2922**