

2019-2020

Surgical Critical Care Fellowship Program



Our mission:

To serve. To heal.
To educate.



Welcome



**Cooper is one of only
three New Jersey
State-Designated Level I
Trauma Centers, serving
southern New Jersey.**

CooperHealth.edu

Thank you for your interest in our ACGME-accredited Surgical Critical Care Fellowship at Cooper University Hospital and Cooper Medical School of Rowan University (CMSRU). This program offers a one year fellowship in Surgical Critical Care, which is a component of the Division of Trauma in the Department of Surgery at Cooper University Health Care.

Cooper University Health Care is the largest academic medical center in southern New Jersey. Cooper is one of only three New Jersey State-Designated Level I Trauma Centers and is also a Level II Pediatric Trauma Center. Cooper serves the needs of a broad patient population consisting of primary, secondary, and tertiary medical care. There are 73 critical care beds divided among Medical/ICU (30), Trauma/Surgical ICU (16), Cardiac Care Unit (12), Trauma Step Down Unit (9), Stroke Unit (4) and Pediatric ICU (6).

As a busy Level I Trauma Center, the emphasis of our Surgical Critical Care Fellowship is on the evaluation, resuscitation, and management of the acute trauma patient and their related critical care. However, each fellow may tailor his or her fellowship to individual goals and clinical needs. Our fellows have the added benefit of working with academic critical care intensivists in many disciplines during their medical/surgical ICU rotations.

The critical care faculty are primarily a group of board-certified critical care surgeons dedicated to the delivery and education of critical care and trauma surgery. In addition, critical care physicians from the departments of medicine, pediatrics, and anesthesia actively participate in our fellows' education.

The following pages will provide specific information about our program, including program description objectives, curriculum, and conferences. If you have any questions, we encourage you to call us at 856.342.3341.



A Note from the Department Chief



Jeffrey P. Carpenter, MD

**"We provide a rich
and varied training
experience with
a large and growing
surgical volume."**

Greetings and thank you for your interest in training at Cooper.

We are southern New Jersey's only academic, tertiary care medical center. As such, we provide a rich and varied training experience with a large and growing surgical volume.

I became Chairman in 2008, after 23 years at the University of Pennsylvania. Since then, Cooper has seen the addition of its new Cooper Medical School of Rowan University, which graduated its first class in 2016. This has deepened our academic resources and enriched the training environment. The campus has seen a number of expansions during this time, with the addition of 25 operating rooms for a total of 38, including two robotic rooms, a room equipped with a CT scanner, a room with an O-arm, 3 hybrid OR/angiographic suites, and state-of-the-art laparoscopy rooms.

The affiliation of Cooper with the world renowned MD Anderson Cancer Center in Houston, Texas, to create MD Anderson Cancer Center at Cooper, has dramatically increased the volume of oncologic and reconstructive surgeries, providing many opportunities for participation in advanced treatment and research protocols.

Our Level 1 Trauma Center is the region's largest and busiest, offering surgical trainees a rich experience in management of traumatic injuries and reconstruction. Our faculty has more than doubled in size since 2008 and now numbers more than 70 surgeons. While they are clinically excellent and busy, they are also extremely academically productive and seek to collaborate with trainees to mentor them in research.

In 2017, the Department of Surgery at Cooper published over 100 articles and book chapters. Our faculty serve on the editorial boards of many journals and are nationally and internationally recognized as leaders in their specialties. We have an active basic science research program, with emphases on regenerative medicine and epigenetics. The department maintains both a large animal and small animal vivarium with two large animal operating rooms. We are passionate about education of surgical trainees and welcome your interest in our programs.

Jeffrey P. Carpenter, MD

Chairman and Chief, Department of Surgery

Surgical Critical Care Fellowship Program



The Surgical Critical Care Fellowship is based at Cooper University Health Sciences Campus, the clinical site for Cooper Medical School of Rowan University (CMSRU). Cooper is a 635-licensed bed, not-for-profit academic medical center, dedicated to the treatment of critically ill and critically injured patients.

The duration of the Surgical Critical Care Fellowship is one year. The surgical critical care fellow will be required to spend seven months in the Trauma/ Surgical ICU, one month rotating through Medical ICU, and other time for experiences in trauma and specialty education. Two months will be spent on elective rotations which may include, but are not limited to: anesthesia, pediatric ICU, cardiovascular ICU, EMS, or further rotations in the medical/ surgical ICU, trauma, or a surgical subspecialty.

The educational philosophy of this Surgical Critical Care Fellowship program is to provide a strong foundation of advanced surgical critical care knowledge and skills upon which a scientifically sound systematic approach to the management of critically ill patients can be developed. This program provides trainees with an advanced level of specialized skills required to attain a mastery of surgical critical care for patients of all age groups. Trainees will be afforded the opportunity to become specialists in the clinical management of critically ill patients, teaching surgical critical care, critical care research, and the administration of surgical critical care units.



The Surgical Critical Care Fellow will take in-house calls. The fellow will take approximately seven calls per month. Operative experience is available and encouraged while on-call. Other operative cases are available on a case-by-case basis.

While on the medical-surgical ICU rotation, a shift system is in place. The fellow will continue to take routine trauma/ICU call. Both trauma and medical/ surgical ICU rotation working hours adhere to ACGME compliance with no greater than 80 hours per week duty hours.

A log of duty hours will be kept in New Innovations, and cases will be logged in the ACGME case log system. These will be routinely reviewed by the Program Director.

serve

Curriculum



Fellows are allowed four weeks of vacation per year. The Surgical Critical Care Fellowship goal is to train surgeons in the subspecialty of surgical critical care. This fellowship will prepare the graduating fellows to function in either an academic center or in a community hospital environment. This will be accomplished by exposing the surgical critical care fellow to a multitude of clinical aspects of critical care, teaching, administration, and research. The specific educational objectives of this fellowship program in surgical critical care are to enable fellows to investigate and evaluate, teach, and clinically apply the fundamental principles of critical care.

Upon completion of the Surgical Critical Care Fellowship, every physician will have developed:

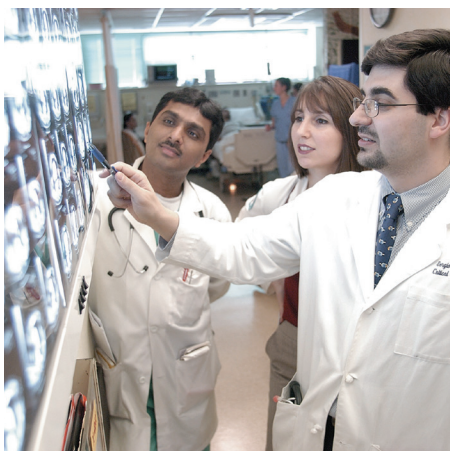
- The ability to perform and teach critical care skills.
- A strong foundation of knowledge related to surgical critical care.
- The ability to demonstrate advanced decision making capability.
- The ability to become the leader of the multidisciplinary critical care team (ie. administer the critical care unit).
- The ability to disseminate the appropriate information to patients and their families.
- The ability to analyze, evaluate and perform critical care research.



Clinically, the fellow will be able to:

- Identify the indications for critical care admission and discharge.
- Perform and provide appropriate resuscitation, utilizing advanced techniques to any patient sustaining a life-threatening event.
- Identify indications for mechanical ventilation, and manage and wean patients from mechanical ventilation using various techniques and ventilator modes.
- Perform and instruct the theory and techniques of CPR.
- Treat all forms of shock using conventional and state of the art techniques.
- Identify, treat, and prevent multiple organ system failure.
- Identify, treat, and prevent all life-threatening electrolyte acid- base disturbances.

Curriculum, continued



Clinically, the fellow will be able to:

- Identify, treat, and prevent malnutrition using advanced nutritional supplement methodologies.
- Perform and provide appropriate conscious sedation.
- Perform and instruct the theory and techniques for appropriate pain management and advanced sedation strategies.
- Perform and recognize the indications, contraindications, and theories for invasive and noninvasive hemodynamic monitoring.
- Titrate inotropic and vasopressor drips based on hemodynamic monitoring.
- Initiate appropriate consultations with other specialists and construct a clinical plan for complex critical care problems.
- Use medications safely and determine cost effectiveness of various therapeutic interventions.
- Educate the health professional team as well as patients and patient families regarding critical care ethical issues.
- Educate and communicate to patients and their families all treatment options, outcomes and patient prognosis.
- Emotionally and mentally support patients and their families through the trauma of critical illness.
- Recognize, manage, and instruct the theories of acute and chronic renal failure.
- Recognize, manage, and instruct the theories of coagulation disorders (acquired and congenital).
- Recognize, manage, and instruct the theories of acute and chronic neurologic disease and injury.
- Recognize, manage, and instruct the theories of acute and chronic anemia.
- Recognize, manage, and instruct the theories of GI disturbances such as GI hemorrhage, pancreatitis, diverticulitis, and cholecystitis.
- Recognize, treat, and monitor hypertension.
- Recognize, treat, and monitor the theories on endocrine dysfunction related to DM, DI, adrenal and thyroid dysfunction.
- Recognize, treat, and monitor the theories on infectious disease, especially as it relates to critical illness.
- Recognize, treat, and monitor abdominal compartment syndrome.





Clinically, the fellow will be able to:

- Triage critically ill patients appropriately.
- Participate in quality assurance processes such as Mortality and Morbidity Conference and Performance Improvement Conference.
- Develop patient safety monitoring and error restriction progress.

The achievement of these objectives is documented in several ways.

Each resident is required to keep a log of the critically ill patients whom he or she has managed. Using this document, residents maintain a record of their clinical activities during the training period, including their roles in the management of each patient, and a listing of major procedures, such as insertion of hemodynamic monitoring devices, endotracheal intubation, and tube thoracostomy, among others.

Acquisition of the critical care cognitive skills will be assessed by the fellow's active participation in teaching rounds, didactic lectures, journal clubs and required formal presentations. The achievement of the educational goals of this Surgical Critical Care Fellowship will be documented also by the results of the Multidisciplinary Critical Knowledge Assessment Program (MCKAP) which the surgical critical care fellow is required to take during their training year. The detailed report received clearly identifies objectively his or her strengths and weaknesses. This information is useful in identifying areas of each fellow's surgical critical care curriculum, which might benefit from directed reading and specifically concentrated training.



heal

Conference Schedule



The educational experiences included in the Surgical Critical Care Fellowship Program consist of formal and informal components. The formal components are primarily regularly scheduled conferences and daily teaching rounds. Less formal learning goes on constantly through the interactions between fellows and faculty.

The Surgical Critical Care Conference Series is the backbone of the formal educational program. This conference will be divided between formal lecture presentation topics taken from the Core Curriculum and Journal Club topics of surgical critical care interest. Pertinent clinical guidelines will also be reviewed during some of the Journal Club dates. The critical care faculty will be the moderators for Journal Club sessions. Each surgical critical care fellow will also be required to present three to four of these didactic lectures. Topics will be assigned to them by the Program Director.

Morbidity and Mortality Meeting

The Morbidity and Mortality Meeting is held monthly to review cases with unexpected outcomes (death, complications, etc.). The fellow responsible for the patient at the time of the patient's death must submit an M&M report using standard form kept in ICU in the critical care section office within 24 hours. For cases selected for review at M&M, that fellow will make a formal presentation.

educate

How to Apply



The Surgical Critical Care and Acute Care Surgery Fellowship Application Service (SAFAS), sponsored by the Surgical Critical Care Program Directors Society (SCCPDS), is currently accepting applications for Appointment Year 2019. Using SAFAS, applicants may complete one standardized application form, upload supporting documents, request letters of recommendation, and submit to multiple SCC and ACS fellowship programs online. Applicants must still use the National Resident Matching Program (NRMP) with Rank Order List (ROL) deadline of September 26, 2018.

For more information on the application service, please visit the SAFAS Website www.safas-sccpds.fluidreview.com or contact the SAFAS Administrator at webmaster@sccpds.org.

The Program Director and two additional faculty members will review applicant files. Invitation for interview will be based upon their recommendations.

Program Eligibility

All PGY- 5 surgical residents who will complete their general surgical residency by June 30, 2019, are eligible.

Contact Information

Director:

John M. Porter, MD, FACS

Associate Program Director:

Salina Wydo, MD, FACS

Contact:

Karen Orlando, Coordinator

Phone:

856-963-3985

Fax:

856-365-7582

Email:

orlando-karen@cooperhealth.edu

Website:

[cooperhealth.edu/fellowships/
surgical-critical-care](http://cooperhealth.edu/fellowships/surgical-critical-care)

Address:

Cooper University Hospital
Office of Surgical Education
Three Cooper Plaza, Suite 411
Camden, NJ 08103

The Cooper Campus and Surrounding Area



**The expansion project
at Cooper is a direct
reflection of the growth
in services that Cooper
has experienced over
the past several years.**



It is extraordinary to have such a high concentration of leadership at one institution, but then, Cooper is an extraordinary health care system.

Cooper University Hospital is the center of a growing Camden health sciences campus that includes the hospital, Cooper Medical School of Rowan University (CMSRU), MD Anderson Cancer Center at Cooper, Sheridan Pavilion at Three Cooper Plaza medical offices, the internationally acclaimed Coriell Institute for Medical Research, and the Ronald McDonald House. Adjacent to the Cooper Plaza/Lanning Square neighborhood, Cooper has a long history of outreach and service efforts to its local community. Some of these initiatives include health and wellness programs for the neighborhood, development of neighborhood parks and playgrounds, and outreach to programs into local schools.

The hospital's 312,000-square-foot, 10-story Roberts Pavilion features an expansive lobby and concourse, a restaurant and coffee shop, business center, gift shop, and chapel. State-of-the-art patient care facilities include private patient rooms, technologically advanced operating room suites with hybrid imaging capabilities, and an advanced laboratory automation facility. The Emergency Department features 25 beds, dedicated isolation suites, and autonomous CT scanning technology. Designated floors serve specific patient populations, including those needing advanced surgical and heart care, along with South Jersey's only dedicated 30-bed inpatient cancer unit.

Also in the Roberts Pavilion is the 25,000-square-foot Dr. Edward D. Viner Intensive Care Unit—featuring 30 private patient rooms equipped with the latest in advanced technology, and allowing 360-degree patient access. Five patient rooms are capable of negative pressure isolation, and five rooms have chambered isolation alcoves. In addition, an enlarged room with operating room caliber lighting is outfitted to perform bedside exploratory laparotomy in patients considered too medically unstable for transport to the operating room.

Cooper University Health Care and MD Anderson Cancer Center in Houston, Texas, partnered in 2013 to create MD Anderson Cancer Center at Cooper. Our partnership is a full clinical integration between the two programs. MD Anderson at Cooper physicians adhere to the same philosophy, processes, and guidelines set by MD Anderson in Houston, and patients receive the same proven practice standards and treatment plans provided at MD Anderson. Today at MD Anderson at Cooper, patients have access to more clinical trials for more types of cancer than ever before, as well as a full range of supportive care services.

Advanced, comprehensive cancer services are provided at our Camden, Voorhees, and Willingboro campuses. Cooper Digestive Health Institute locations are fully accredited MD Anderson at Cooper locations providing

The Cooper Campus and Surrounding Area **continued**



innovative gastrointestinal cancer prevention, detection, and treatment services. Additional cancer clinical services are provided at multiple locations throughout the Philadelphia-South Jersey areas.

CMSRU's Medical Education Building is located on the Cooper Health Sciences Campus on South Broadway, between Benson and Washington Streets in Camden. The medical school, which opened in July 2012, was designed to support an innovative curriculum that integrates knowledge of basic science concepts, early clinical experience and patient care, self-directed learning, teamwork, and medical and non-medical activities for the greater community's benefit.

The Cooper Health Sciences Campus is located in the heart of Camden's business district. The academic medical center campus is easily accessible by car or public transportation via the PATCO and bus terminal adjacent to the hospital.

Cooper is a short walk or drive from the exciting Camden waterfront, which includes a magnificent waterfront park and marina; the Adventure Aquarium; and the BB&T Pavilion, which hosts nationally renowned entertainment throughout the year. Nearby are the Sixers Training Complex, L3 Communications complex, Lockheed Martin, Rutgers University Camden Campus, and Camden County College. There are expected to be \$350M in transportation and infrastructure improvements within the next four to five years to handle the influx of thousands of new employees to the area and students at nearby growing academic campuses.

Cooper is conveniently close to Philadelphia. Just a mile-long drive over the Benjamin Franklin Bridge will put you at the doorstep of Philadelphia's cultural, culinary, and historic venues. South Jersey also offers a range of living and entertainment options. Quaint towns such as Haddonfield and Collingswood are just 10 minutes away. The lights and action of Atlantic City and popular beach towns such as Cape May and Ocean City are a one-hour drive from Cooper.

Cooper Camden Campus Map



The most up-to-date directions to Cooper University Hospital are available at:
CooperHealth.org/Locations

campus



World Class Care. Right Here. Right Now.

One Cooper Plaza · Camden, NJ 08103-1489 · CooperHealth.edu

Hospital Main Number: **856-342-2000**

Graduate Medical Education: **856-342-2922**